

Western-style Painting in the Edo period

June 9th (Tue) - September 6th (Sun), 2020

Special Exhibition

During the Edo period, Dejima in present Nagasaki prefecture was the only window to modern foreign cultures, which introduced new expressions to Japanese paintings. Western-style expressions could be seen under the influence of European style painting technique in glass paintings and Nagasaki woodblock prints whose themes were foreign objects, optique pictures, and Doro-e, pictorial souvenir from Edo in thick and opaque pigments. This exhibition introduces Western style paintings and Doro-e of the second half of the Edo period which Soetsu Yanagi, founder of the Museum, called 'crafted paintings' and regarded as folk paintings.

THE JAPAN FOLK CRAFTS MUSEUM www.mingeikan.or.jp/english tel 03-3467-4527 / 4-3-33, Komaba, Meguro-ku TOKYO

Thematic Exhibition

1 Japanese Ceramics

There are more than 3,800 Japanese ceramics in our collection, both new and old. The basis of the collection is its beauty, not its period, origin nor usage. This room exhibits about 50 ceramics from various region in Japan such as several kilns in Kyushu region and Tohoku region, Seto (Aichi prefecture), Tamba (Hyogo prefecture) and Tsuboya (Okinawa prefecture).

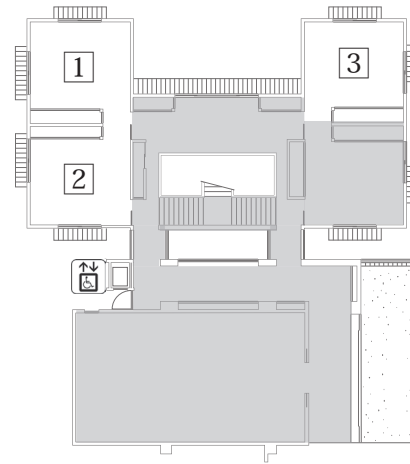
2 Korean Ceramics

More than 600 Korean ceramics from 5th century to later 19th century are the core of our renowned Korean crafts collection. In this room exhibits those excellent pieces from Korea including white porcelains and Buncheong ware with style (potteries with white slip also called Mishima-de). Please recognize their beauty again in this occasion.

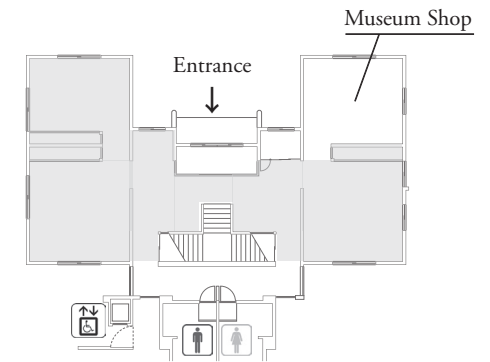
3 New Acquisition

This room mainly displays the donation from the lacquer craftsman Toshio Tanaka, which are splendid crafts from Japan, Korea, and China. There includes a lacquer bowl with a leaf design, which was formerly possessed by Koka Yamamura. Yanagi had highly praised this bowl in the *Kogei* (Crafts) 102nd issue, "Very beautiful in pattern, free in brush strokes. I wonder why an interesting piece like this cannot be produced now".

SECOND FLOOR



FIRST FLOOR



Featured Exhibition

Shiko Munakata

Exchanging with His Mentors

The world-famous woodblock print artist Shiko Munakata (1903-1975) had admired Soetsu Yanagi (1889-1961) as his only teacher. By knowing him, the ceramic artists Kanjiro Kawai (1890-1966) and Shoji Hamada (1894-1978) had also given inspirations for his masterpieces. This featured exhibition introduces "*Yamatoshi-Uruwashi* (Beautiful Japan)" which gave Munakata a chance to acquaintances with Hamada and Yanagi, "*Shōkeishō* (In the Praise of Kawai)", "*Kokorouta* (Poems from the Heart)" which was made to encourage Yanagi sick in bed. Also main ceramic works by Kawai and Hamada are on display.

NOTICE:

Please do not touch the exhibited works.
The use of pens, fountain pens, or watercolors are prohibited.
Photography is not allowed in the gallery.
Please switch off your cell phones.