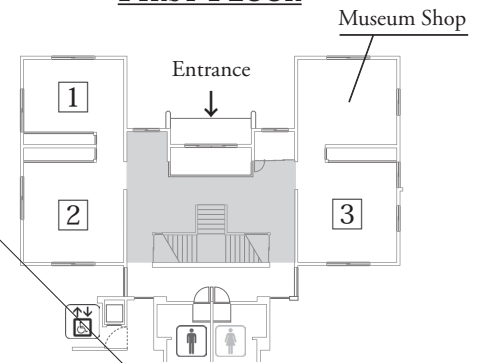


Forms with Prayers

– focusing on Okinawa burial urns

January 12th (Sun) - March 22nd (Sun), 2020

FIRST FLOOR



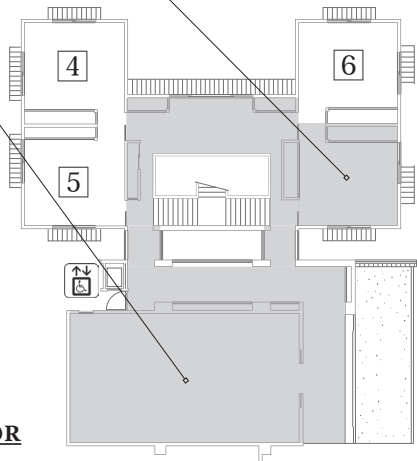
Special Exhibition

2F Room4 **Forms with Prayers – from Japanese Crafts**

The museum founder Soetsu Yanagi (1889-1961) deemed so-called religious art works as crafted works, not fine arts. The reason he assured was that there was religious utility as well as expression beyond individuals of whole era. In this room we exhibit our new acquisition a segment of “the Legend of the Kumano Honji” (Muromachi period, mid 14th to mid 16th century) and other collection from Japanese crafts.

Main Hall **Forms with Prayers – Okinawa burial urns**

Soetsu Yanagi had visited Okinawa four times. He had praised its local life with devout piety and respected it deeply. The burial urns which developed from the pure prayers are embodiment with the beauty, realization of innocent and austere. Here display 34 excellent pieces including new 25 donated and 2 acquisitioned urns. Because they are coffin for bones where the deceased lie, Okinawa burial urns have not been often on display. We're honored that this exhibition would be a support for the recognition of their beauty.



SECOND FLOOR

THE JAPAN FOLK CRAFTS MUSEUM www.mingeikan.or.jp/english tel 03-3467-4527 / 4-3-33, Komaba, Meguro-ku TOKYO

Thematic Exhibition

- 1 Japanese Folk Kilns** (opens on February 1st)
Folk kilns have responded to people's every day needs such as pots, plates, bowls, pitchers and grinders. This room exhibits potteries from Kyushu, Chugoku, and Tohoku region in Japan. Please enjoy the charm made from utility and powerful shapes.
- 2 Okinawan Crafts**
In Ryukyu Kingdom bloomed a unique characteristic craft culture in textiles, potteries and lacquers. The display introduces crafts rich in expression, mainly potteries such as “*joyachi* (glazed potteries)” and “*arayachi* (unglazed potteries)”, bright vermilion lacquered wares and guardian lions on the roofs.
- 3 Okinawan Textile – Weavings and Bingata –**
The exhibition shows Okinawan superior textiles, for example ikats and striped clothing woven in silk, cotton or ramie, *tisaaji* woven especially for loved ones and other characteristic weavings. Also Bingata dyeings with distinguishing feature which are lively dyed in patterns and colors are introduced.
- 4 Okinawa and Artists-Craftsman in Mingei Movement**
This room shows works by a dyer Keisuke Serizawa (1895-1984), two potters Kanjiro Kawai (1890-1966) and Shoji Hamada (1894-1978), and other artists who had learned from Okinawa crafts, and also works by an Okinawan potter Jiro Kinjo (1912-2004).
- 5 Crafts of Joseon Period**
Crafts of Joseon period (1392-1910) such as ceramics, wood crafts, metal works, stoneware and paintings have a free and placid character. Please enjoy indigenous beauty of the Korean people in color, shape and pattern, which have attracted Yanagi and many others.
- 6 Libation Crafts and Sacred Straw Festoons – charms and magic formulas**
Sacred straw festoons were firstly made to distinguish a sacred place and an outer world, and now placed on doors on New Year's Day for protection from misfortune. Exhibited are the sacred straw festoons, libation crafts for house shrines and other folk belief crafts.

We express sincere sympathy to a significant damage by Shuri castle fire.

Since the opening of the Japan Folk Crafts Museum in 1936, we have had 23 important exhibitions introducing Okinawa crafts, starting in 1938 “Ryukyu Textiles (bingata, stripes and ikats)”. The number is prominent, and it explains that crafts in Okinawa are very important theme for us and the beauty expresses the Soetsu Yanagi's philosophy. Unfortunately, the heartbreaking Shuri castle fire has destroyed its main building, north building, south building and many other important cultural properties. Therefore we would like to install a donation box and make an appeal for Okinawan prefectural government ‘Donations to the Shuri Castle Fire Restoration’ (during this exhibition term only) Please join us to support.