

# THE BEAUTY OF AINU HANDIWORK

SEPTEMBER 15TH TO NOVEMBER 23RD, 2020

THE JAPAN FOLK CRAFTS MUSEUM  
www.mingeikan.or.jp/english/  
tel 03-3467-4527 / 4-3-33, Komaba, Meguro-ku TOKYO

## FIRST FLOOR

1F Entrance:

2F Upstairs Hallway:

2F Main Hall:

### Notice for Photographic Area:

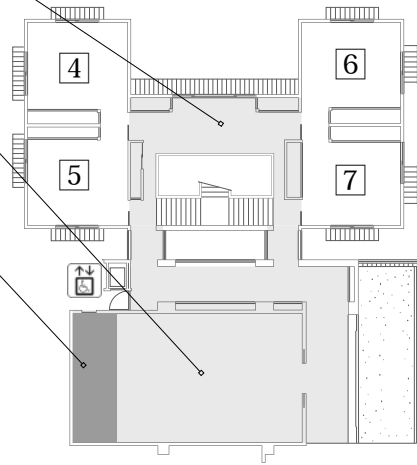
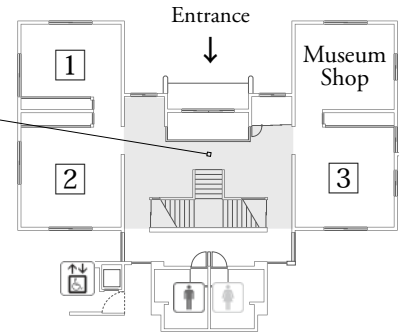
#### PLEASE

- Permitted area only
- Do not touch art works
- No flash, no tripods, no selfie sticks
- No video
- Respect other visitors

#### Notice for Using Photography

#### PLEASE

- Do not process
- Be careful of portrait rights of other visitors
- For non-profit and personal use only



## SECOND FLOOR

## THEMATIC EXHIBITION

### 1 CERAMIC PAINTINGS

Different from painting on flat paper with ink or paints, drawing on ceramics is much more difficult and greatly influenced by firing. Under these restrictions, potters made fascinating pictures on ceramics with quality of materials and natural brush works. This room displays ceramic paintings mainly with brushes.

### 2 LIGHT EQUIPMENTS

The history of room lights has started since use of fire. After use of oil and candles, a variety of lighting utensils have been made and used as essential crafts of life until the wide spread of electricity. We would like to introduce crafts related to lightnings in this room.

### 3 HANDIWORKS OF INDIGENOUS TAIWAN

In 1943, after 2 years from "Ainu Crafts and Culture Exhibition", Yanagi investigated Taiwanese crafts and acknowledged handiworks by indigenous Taiwan as the same kind of those by Ainu people, which are deeply connected to the nature and devoted prayers. Weaving with primitive loom which Yanagi had immensely admired and others are on display.

### 4 BOXES

The boxes as containers are traditionally familiar crafts and close to our lives. In this exhibition room on display are wood works, ceramics, metal works and leather works of both old works from Japan and Korean Peninsula and modern works by artist-craftsmen.

### 5 WHITE PORCELAIN, BLUE-AND-WHITE PORCELAIN, CINNABAR AND IRON GLAZE FROM JOSEON DYNASTY

There are about 350 works of white porcelain, blue-and-white porcelain, cinnabar and iron glazed porcelain from Joseon Dynasty in our collection. In this room exhibits "Beveled Jar with autumn flower motif, blue-and-white" which encouraged Yanagi to the world of crafts, and other ceramic masterpieces such as "Jar with grapes and squirrels motif, blue-and-white, underglaze iron", "Jar with tiger and magpie motif, cinnabar glaze", both drawn through flowing brush works.

### 6 BUDDHIST WOODCUT PRINTS

Buddhist woodcuts have been made to propagate Buddhism to people. Illustrations from religious belief such as Amitabha Buddha, Fudo Myoo (Acalanatha Vidya-raj), Shomen Kongo (Blue faced Vajra), Thirteen Buddhas and talisman had appeared. In this room mainly exhibits Buddhist woodcuts, and also woodcut blocks and ritual articles.

### 7 WORKS BY KEISUKE SERIZAWA

Keisuke Serizawa (1895-1984) was a dyer and participated in the Mingei Movement directed by Soetsu Yanagi. He studied *bingata* (Okinawan dying) and *wazome* (Japanese dying), and developed original stencil technique called "kata-e-zome" which finishes drafting, stencil cutting and dyeing consistently. Introducing affluent works with bright color tone and clear patterns which are appraised in both Japan and worldwide.