

# Windsor Chairs – British chairs admired by Japanese

September 7th (Thu) - November 23rd (Wed), 2017

THE JAPAN FOLK CRAFTS MUSEUM

www.mingeikan.or.jp/english/

tel 03-3467-4527 / 4-3-33, Komaba, Meguro-ku TOKYO

Thematic Exhibition

## Ritual Articles

In this room, about 50 objects of wood works, urushi lacquer ware, and metal works are exhibited. They are faithful folk crafts such as altars for Buddhism and Shinto, ritual articles for ceremonial purpose, utensils inherited at temples or shrines and religious offerings.

## Michitada and Kenji Funaki, Bernard Leach

Fujina-Funaki kiln is located at Matsue-city in Shimane Prefecture. Father and son, Michitada and Kenji Funaki are fourth and fifth master, and had been established close relationship with Mingei advocates, especially English potter Bernard Leach. Here, the works of Funakis which demonstrates deep influence of the Western culture and works by Leach made at Funaki kiln are shown.

## Folk Crafts of Joseon Dynasty

During the latter half of Joseon Dynasty, Confucianism was the foundation of its distinctive folk crafts in the Korean Peninsula. Stationery and furniture of integrity and simplicity used by men, bright and gorgeous sewing kits and accessories used by women, and also living crafts for dining such as trays and table ware are on display.

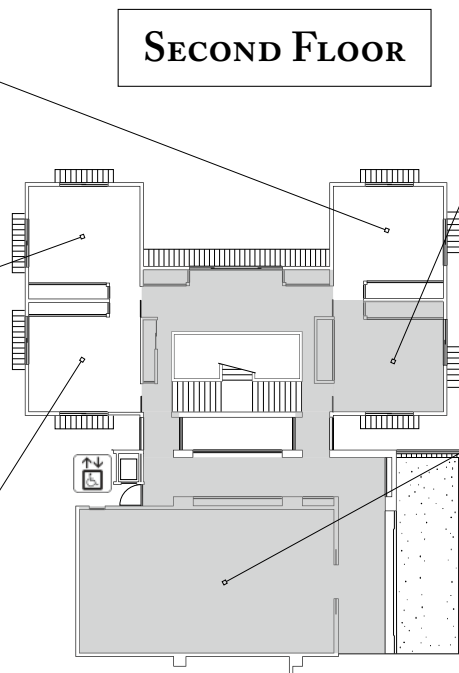
## Weavings of Japan

Striped, check-patterned, and ikats textiles woven from dyed yarns with botanicals such as indigo in substantial quality are exhibited. The weaving works of Tamba which are blended with hand-spun cotton and white silk waste threads are ingenious check-patterned textiles. Often applied to beddings and cushions, and Soetsu Yanagi appreciated its beauty in particular.

## Old Ceramics in Japan

The old ceramics in Japan from the museum collection were mainly daily necessities produced in folk kilns. In this room display blue-and-white porcelains of Imari and Hasami ware which are beloved by many people. We also introduce masterpieces of folk kilns mainly in Edo period such as Tamba ware and Satsuma ware (Black Satsuma) which are appraised for the first time by Soetsu Yanagi.

## SECOND FLOOR



## Various Regional Chairs from Europe and America - mainly from 17th to 18th century

In this room, various regional chairs from 17th century before the Windsor chairs were invented and the following 18th century are exhibited. These chairs are suited for practical use and nurtured by daily life, and the beauty has been increased by secular change. Its art of shaping shares the common basis with Windsor chairs.

## Windsor Chairs - British chairs admired by Japanese

The Windsor chairs production began in the first half of 18th century. The wooden chair has wooden seat into which legs and back supports are mortised, and accepted as a practical object with naïve beauty by wide stratum of people. Here, Windsor chairs which originally manufactured in UK are mainly on display.

## Museum Shop

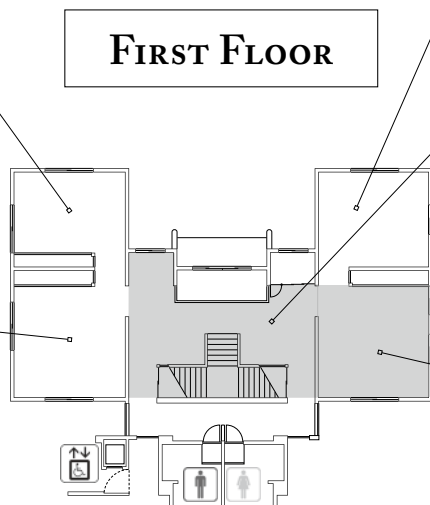
## Various Regional Chairs from UK and Slipware - mainly chairs from 17th and 18th century

Here, exhibited various regional chairs in UK starting 17th century. The productive backgrounds and procedure were different, but its natural and simple structure shares common beauty with Windsor chairs. Also from the museum collection show historical slipware and furniture to illustrate multiple kinds of Western crafts.

## Various Regional Chairs from Europe and America - mainly from 19th and 20th century

In this room display various regional chairs made during the same generation as Windsor chairs. Produced areas differ such as UK, Italy, France, Spain, Finland, Austria and US, but they share the same taste of beauty in shaping.

## FIRST FLOOR



Special Exhibition

Special Exhibition

Thematic Exhibition