

SOETSU YANAGI'S ONLY DISCIPLE SHIGEO SUZUKI EXHIBITION

— CREATION BY HIS HANDS AND EYES

JANUARY 14TH (SUN) TO MARCH 20TH (WED) 2024

Shigeo Suzuki (1914–2003), whose talent was admitted by Soetsu Yanagi, became his disciple in 1935, lived in Yanagi's house, and was strictly educated about crafts and direct perception by Yanagi as his first and last disciple. He also produced a variety of works such as ceramics, book designs and lacquer paintings, and the characteristics of his works are originality of sophisticated patterns in brushes or stencils. On the occasion of 20 years after his death, this exhibition honorably introduces the works of crafted-artist Shigeo Suzuki by hands and eyes.

NOTICE

- Please do not touch exhibited works and showcases.
- The use of tools which can damage artworks such as pens or ink brushes are prohibited.
- Please refrain from using cell phones.
- Please do not take photographs or movies except designated areas.

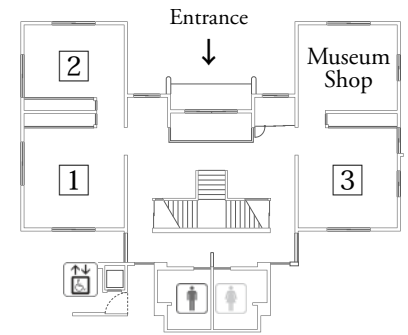
Notice for Photographic Area:

Side wall glass case in the Main Hall (2nd floor) is the ONLY area for photographs.

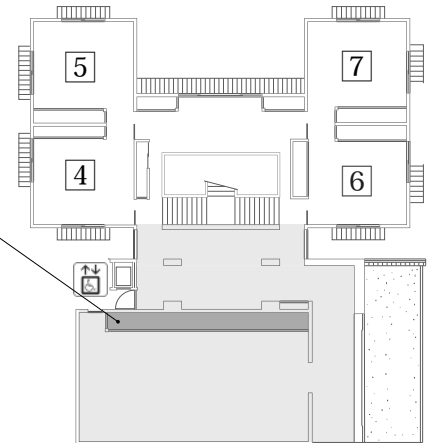
PLEASE

- No flash, no tripods, no video recordings.
- Please respect other visitors while taking photographs.
- Please do not process.
- Please be careful of the portrait rights of other visitors in your photos.
- For non-profit and personal use only.

FIRST FLOOR



SECOND FLOOR



THEMATIC EXHIBITION

1 CERAMICS WITH PLANTS PATTERNS

In this room, we exhibit a variety of dishes, pots and jars primarily made by various kilns from the Momoyama period to the Edo period featuring painted decorations. We particularly focus on items adorned with plant patterns. Sometimes generously, sometimes refined paintings never cease to capture the hearts of both viewers and users.

2 B.LEACH, SHOJI HAMADA AND KENKICHI TOMIMOTO (OPEN ON FEBRUARY 1ST)

Bernard Leach (1887–1979), Shoji Hamada (1894–1978), and Kenkichi Tomimoto (1886–1963) are the maestros of the modern pottery. Shigeo Suzuki had a close relationship with them through Yanagi's introduction. They significantly influenced Suzuki himself, and their works are introduced here.

3 WORKS BY SAMIRO YUNOKI

Dyer Samiro Yunoki (1922–) has learned Yanagi's philosophy and the beauty of mingei through Shigeo Suzuki, has been given training of direct perception by him, and has greatly been affected by him. This room displays works by Yunoki from our collection with full of vitality such as ornamental fabrics and obi sashes repleted with rich in colors mainly with vibrant reds.

7 EMA (VOTIVE PLAQUES) AND RITUAL IMPLEMENTS

Votive plaques, known as Ema, are dedicated to shrines and temples for prayers and expressions of gratitude. Noteworthy for their smaller size compared to the larger ema called "Hengaku", these small ema often depict specific images representing the devotees' wishes, such as recovery from illness or safe childbirth. Alongside various crafted item offered before the deities, this room will focus on the diverse visual representations of people's heartfelt desires.

4 JOSEON MASON WORKS AND WHITE PORCELAIN

Korean Peninsula is abundant in stones, and stone crafts have been actively produced since the ancient times. The characteristic beauty of the Joseon mason shape are obvious in braziers, kettles, ink stones to small items such as water droppers. Also splendid works of white porcelain of Joseon period from our collection are exhibited.

5 ARTIST-CRAFTSMEN OF MINGEI MOVEMENT

In this room, we display works of potter Seijiro Takeuchi (1921–1979) who closely interacted with Suzuki. Also, other potters such as Michitada Funaki (1900–1963/father) and Kenji Funaki (1927–2015/son), Jiro Kinjo (1922–2004), all actively participated in creative endeavors during the same era as the second generation of mingei movement, are introduced.

6 PAINTINGS OF MUROMACHI TO EDO PERIOD

From the medieval period to the early modern era, there was a notable development of art with simplicity, catering to the common people. This included religious paintings for the masses, illustrated scrolls and picture books of short stories and fairy tales from Muromachi period, and Otsue paintings purchased by travelers on high roads. In this exhibition room, we will showcase selected paintings related to the warrior class from this era.