

MINGEI, UNINTENTIONAL BEAUTY

- WHAT NAOTO FUKASAWA IS TOUCHED

MARCH 30TH TO JUNE 1ST , 2025

Why are people moved by the uncontrived beauty of Mingei born from nature itself? Naoto Fukasawa, product designer and our museum director, selected objects from our collection that have impressed and inspired him. The qualities such as “warmth”, “familiarity”, and “charm” he highlights are the appeal of Mingei aesthetics. As crystallizations of everyday beauty, mingei objects serve as vital touchstones for reexamining the way we live in the future.

NOTICE

- Please do not touch exhibited works and showcases.
- The use of tools which can damage artworks such as pens or ink brushes are prohibited.
- Please refrain from using cell phones.
- Please do not take photographs or movies except designated areas.

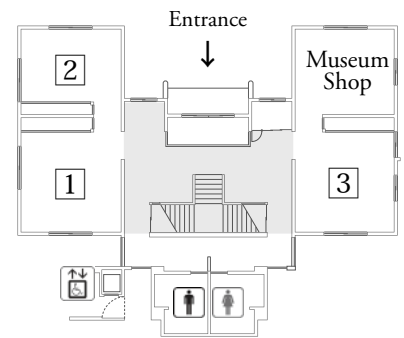
Notice for Photographic Area:

Side wall glass case in the Main Hall (2nd floor) is the ONLY area for photographs.

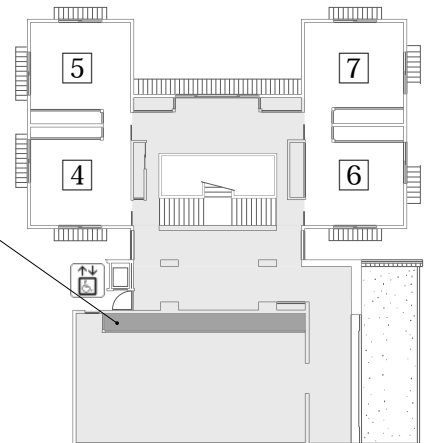
PLEASE

- No flash, no tripods, no video recordings.
- Please respect other visitors while taking photographs.
- Please do not process.
- Please be careful of the portrait rights of other visitors in your photos.
- For non-profit and personal use only.

FIRST FLOOR



SECOND FLOOR



THEMATIC EXHIBITION

1 WESTERN CERAMICS

We introduce Western ceramics from our collection including British slipware that have gained popularity in Japan, Spanish ceramics like Islamic-influenced lusterware, German pitchers known as Rhein stoneware, and Delftware adorned with vibrant hand-painted designs and so on.

2 WESTERN METALWORKS

The Murata Collection, donated in the autumn 2022, includes a large number of Western metalworks. They embrace tools for hearth crafted by blacksmiths, personal items such as knives and scissors, pewter vessels featuring elegant plates and pitchers, and intricately designed locks and keys. Please explore these exceptional examples of Western metal craftsmanship.

3 THE CRAFTS OF TAIWAN'S INDIGENOUS PEOPLES

In 1943, as the war intensified, Soetsu Yanagi spent a month conducting a survey of Taiwanese crafts. Deeply admired by the rich variety of objects shaped by the diverse cultures and lifestyles of different ethnic groups, he also expressed profound respect for the people who created them. This room presents a selection of these crafts focusing on textiles while also showcasing ornaments, baskets, and other works.

4 BLUE-AND-WHITE AND COPPER-RED OF JOSEON WHITE PORCELAIN

Korean white porcelain from the Joseon dynasty features a diverse range of painted motifs rendered in blue-and-white and copper-red decoration. The vivid lines and colors of these works continue to inspire awe and admiration today. Exhibits a selection of these exquisite pieces including the “Blue-and-white Jar with Autumn Flower design” which played a pivotal role in Yanagi’s discovery of the beauty of Korean crafts.

5 MICHITADA AND KENJI FUNAKI

Fourth-generation potter Michitada Funaki (1900-1963) and his son, fifth-generation Kenji (1927-2015), of Funaki kiln, Fujina, Shimane prefecture, developed their own distinctive style through exchanges with leaders of the Mingei movement. This room presents their vibrant pottery including jars and bowls featuring their signature yellow glaze.

6 BUDDHIST NARRATIVE PAINTINGS AND STORY ILLUSTRATIONS

This room features medieval and early modern paintings that depict various tales and Buddhist parables. Highlights include a painting scroll illustrating the fairy tale of Urashima Taro as well as illustrated handscrolls and picture books based on different narratives. Also on display are explanatory paintings portraying Buddhist moral stories and visions of hells, all rendered in a simple and placid style.

7 LACQUER-PAINTED TRAYS

Trays used for serving purposes became widely popular in Japan from Momoyama to Edo period (1573-1868). This room highlights urushi-e (lacquer-painted) trays, which feature decorative motifs painted with colored lacquer mixed with pigments. Also on display are various types of trays including *oshiki* (flat serving trays), footed trays, tall pedestal trays, and *zen* (individual dining trays).

THE JAPAN FOLK CRAFTS MUSEUM

www.mingeikan.or.jp/english/

4-3-33, Komaba, Meguro-ku TOKYO